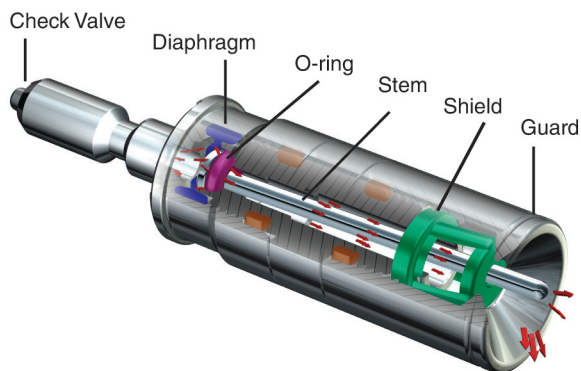


A160 Shielded Drinking Valve



Check valve

Keeps debris from entering the valve when disconnected from the manifold.

Diaphragm

Provides the spring force to hold the stem against the o-ring. When animals release the stem, the diaphragm immediately closes the valve and water flow stops.

O-ring and Stem

Provides the seal that prevents water from flowing. When animals move the stem, the seal is opened allowing water to flow.

Shield and Guard

Prevents bedding from lodging in the valve to ensure trouble free operation water bottles.

Features & Benefits

The A160 Shielded Drinking Valve for mice and rats is used in vivariums around the world to deliver clean, fresh water on demand. The A160 is designed for use with ventilated caging systems, or any application that requires the drinking valve to be inside the cage. The A160 features a silicone rubber shield at the tip of the valve, which prevents bedding from entering the valve. It also has a stainless steel guard, which surrounds the stem to prevent inadvertent activation of the valve by the animals. The A160 is an important part of an Edstrom Automated Watering System. Automated watering has been shown to increase water quality, dramatically reduce labor and prevent the ergonomic risks associated with water bottles. Automated watering also complements the microenvironmental housing concept by eliminating the cage handling required to service water bottles.

2 Year Warranty.

A160 Shielded Drinking Valve



Easy Connect Latch

The Easy Connect Latch holds the cage in place, assuring that it is properly connected. The operator just pushes it out of the way with the back of the hand as they grasp the side of the cage and push it fully forward to its docking position. The latch also has a visual indicator dot that is visible when cages are not completely latched. A quick scan of the rack will show if any cage is not properly docked.

Mice Adaptability Studies

Evaluation of the adaptability of various strains of naive* weanling mice to the A160 Drinking Valve**

Strain	Sex	No. of Animals	Avg. wgt on Arrival	Avg. wgt Day 3	Avg. wgt Day 7
C57BL/6	M	57	10.76	13.14	19.21
CD-1	M/F	60	12.61	16.22	21.21
B6C3F1	M/F	57	12.47	14.51	17.09
DBA/2	M/F	49	10.89	13.11	14.10
C3H	M/F	55	10.07	12.07	14.20
NU/NUCD1	M	27	14.46	17.31	19.30
SJL/J	M/F	56	9.12	10.45	12.91

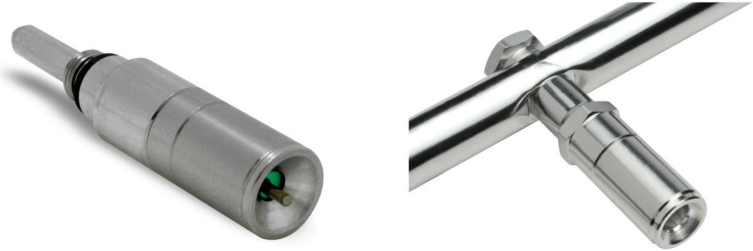
*Naive animals were purchased from supplier's barrier rooms not currently utilizing automated water systems.

**Animal models were group housed in a ventilated cage rack, four animals per micro-environment cage.

All specifications are subject to change without notice.

Easy Connect Coupler

When the A160 is permanently mounted into the animal cage, it plugs into the watering system manifold via the Easy Connect Coupler. The coupler has a spring-loaded seal, which is opened when the valve is pushed into place.



Model No. A160 DV Shielded Tip/EC5 Cap
Part No. 1000-1689 and 1000-1688 (Lab Products)

Affixed to Manifold

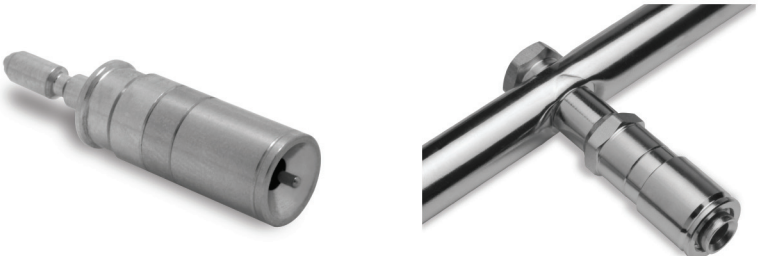
In applications where cages have open grommets for valve entry, the A160 may be permanently affixed to the manifold. As the cage slides into place, the valve goes through the grommet. The grommet has a flap door, which is closed by a spring when the cage is removed from the rack.



Model No. A160 DV Shielded Tip 3/8-32 Thd
Part No. 1000-1641

Locking Quick Disconnect (QD)

Another option for open grommet applications is the Locking QD. Pulling back on the collar of the QD releases the A160, allowing it to be removed for sanitization.



Model No. A160 DV Shielded Tip 3/8-32 Thd
Part No. 1000-1665

Edstrom Industries, LLC
819 Bakke Avenue Waterford, WI 53185 USA
Tel: 262-534-5181 or 800-558-5913
www.edstrom.com

Our Quality Management System is Certified to ISO 9001

Edstrom