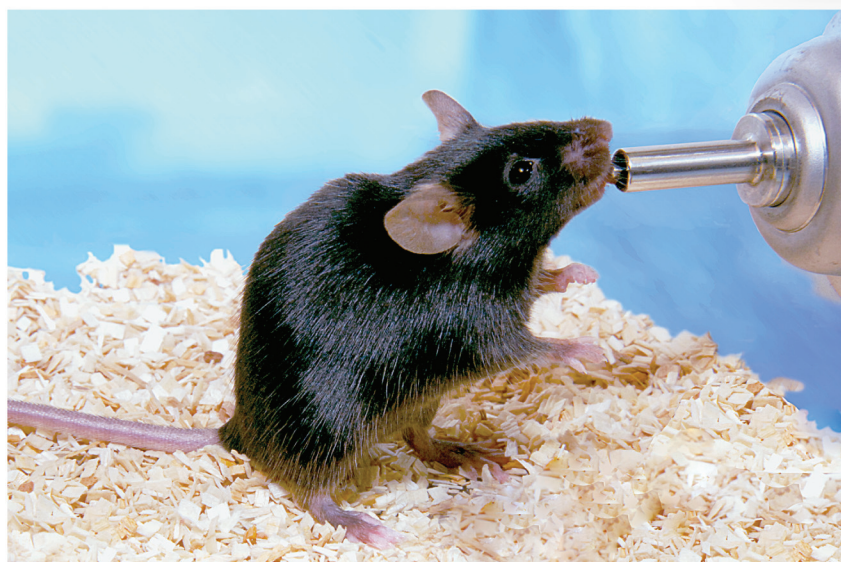


# A140 Drinking Valves



## Description

The A140 Animal Drinking Valve is used in vivariums around the world to deliver water on demand. It is designed for use by mice, rats, rabbits, guinea pigs, and non-human primates housed in conventional caging systems. It can also be used in applications that require the drinking valve to be located outside the cage. Made of 316 stainless steel (stem is 302HQ stainless steel) and silicone rubber components, the A140 is autoclavable and can withstand chlorinated/acidified water.

The drinking valve is the heart of an Edstrom Automated Watering System. Automated watering has been shown to dramatically reduce labor costs and prevent the ergonomic risks associated with using water bottles. When utilized with reverse osmosis purification systems, automated watering also improves water quality.

The A140 family consists of four tip styles: standard, stem guard, recessed, and biased. Each valve is calibrated to deliver the appropriate amount of water for the species it serves. Flow rates are adjustable.

This drinking valve is available with a variety of methods for connecting to the water supply line. It can be mounted directly onto punched stainless steel pipe using the version with the punched pipe cap, or threaded into pipe using the version with 1/8 inch male pipe thread cap. It is also available with a barbed fitting for connecting into 3/16 inch ID flexible tubing. Special models are available with Quick Disconnect (QD) connection.

## A140 Drinking Valves

### FLOW RATES (mL/minute)

Rodents (ROD)	25 ± 5
Rabbits (RAB)	40 ± 5
Guinea Pigs (GP)	20 ± 5
Primates (PRM)	50 ± 10

# A140 Drinking Valves

## A140 VALVE BY TYPE, CONNECTION AND PART NUMBER

### STANDARD TIP VALVE

#### *1/8 in. Male Pipe Thread*

- 1000-1400-ROD
- 1000-1400-RAB
- 1000-1400-GP
- 1000-1400-PRM

#### *Punched Pipe*

- 1000-1405-ROD
- 1000-1405-RAB
- 1000-1405-GP

#### *Barbed*

- 1000-1455-ROD
- 1000-1455-RAB
- 1000-1455-GP

### STEM GUARD TIP VALVE

#### *1/8 in. Male Pipe Thread*

- 1000-1410-ROD
- 1000-1410-GP

#### *Punched Pipe*

- 1000-1415-ROD
- 1000-1415-GP

#### *Barbed*

- 1000-1456-GP

### RECESSED STEM TIP VALVE

#### *1/8 in. Male Pipe Thread*

- 1000-1420-ROD
- 1000-1420-GP

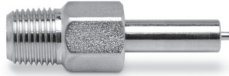
### BIASED TIP VALVE

#### *1/8 in. Male Pipe Thread*

- 1000-1430-RAB
- 1000-1430-PRM

## A140 Drinking Valve Tip Varieties

STANDARD TIP VALVE *(For Rodents, Rabbits, Guinea Pigs, and Primates)*



STEM GUARD TIP VALVE *(For Rodents and Guinea Pigs)*



RECESSED STEM TIP VALVE *(For Rodents and Guinea Pigs)*



BIASED STEM TIP VALVE *(For Rabbits and Primates)*



Edstrom Industries, LLC  
819 Bakke Avenue Waterford, WI 53185 USA  
Tel: 262-534-5181 or 800-558-5913  
www.edstrom.com

**Edstrom**

Our Quality Management System is Certified to ISO 9001